



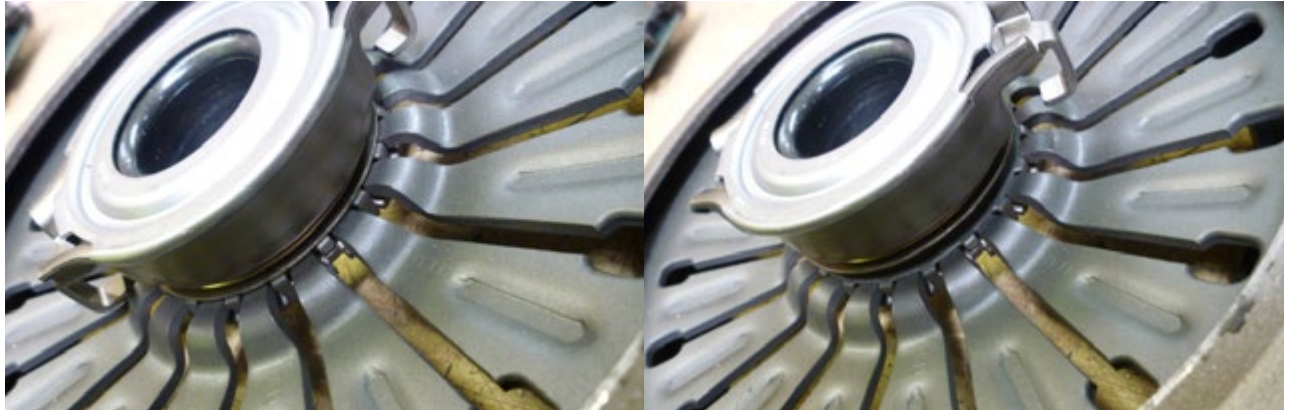
# CLUTCHTECH



## TSB - PULL01

### Safe removal of a release bearing from a Pull-Type Clutch Cover.

1. In most pull type clutch designs the bearing is located by a snap ring which seats in a locking collar when the clutch is operated.



2. To remove the bearing from the cover a wedge will need to be used between the bearing and the bearing locating collar (a screwdriver can be used for this). Carefully twist the wedge so the bearing is removed on a slight angle. Removing the bearing on this angle will assist in the snap ring becoming dislodged from the locating groove.



[youtube.com/watch?v=4u2mhq1kKK0](https://youtube.com/watch?v=4u2mhq1kKK0)



Scan with a QR app on your smart phone

#### LEADING BRANDS

CLUTCHPRO CLUTCHPRO



[australianclutch.com.au](http://australianclutch.com.au)

1800 CLUTCH (258824)

