



Installation instructions Mitsubishi L200 Series 5 & Fiat Fullback (2016-)

Please read these instructions carefully. If you have any questions regarding the fitting of this item call 01384 485405 or email fitting@autostylinguk.com.

KIT CONTENTS

- 1 x Assembled Trucklok (including actuator)
- 1 x Wiring harness kit.
- 1 x Self tapping screw.
- 1 x Self adhesive cable tie mount.
- 2 x 100mm cable tie.

PRE-INSTALLATION CHECKS.

Carry out a visual check of the vehicle.
Carry out a functional check and test the vehicle systems prior to starting the installation, in particular, the areas to be worked on during the course of the installation.
Vehicle electrical work should be carried out by a competent person.

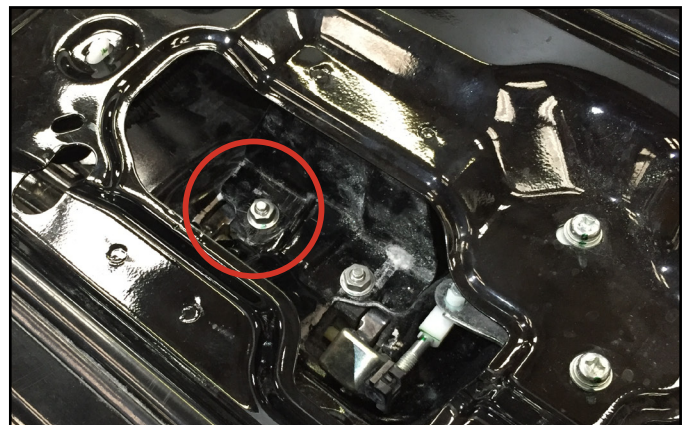
1, REMOVE TAILGATE ACCESS COVER.

Remove any tailgate liner or cover (if fitted) then remove the remaining screws securing the tailgate access cover.
Lift it off and set it aside.



2, REMOVE NUT.

Locate this handle retaining nut on the inside of the tailgate.
Unscrew it and put it aside. It will be re-fitted later.

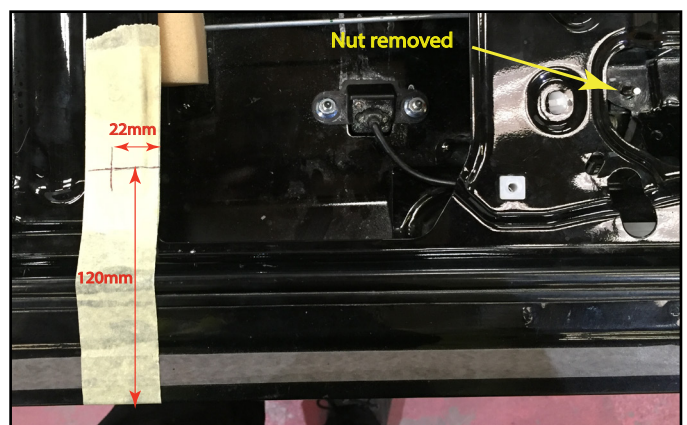


3, MARK AND DRILL A PILOT HOLE.

Apply masking tape to the tailgate in the position shown to the left of the handle.

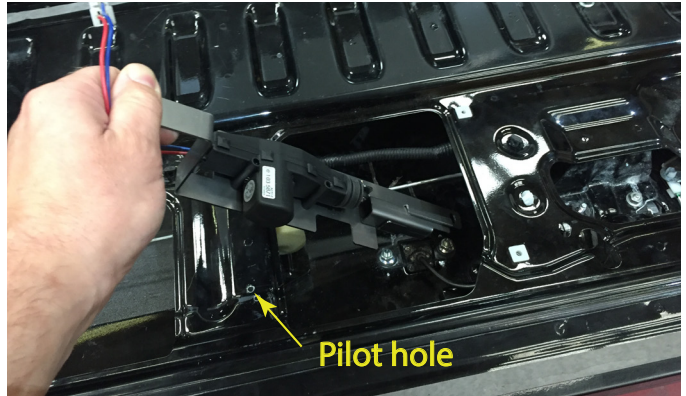
Mark a cross 120mm from the top of the tailgate and 22mm from the right side of the metal rib.

Drill a 3mm pilot hole in the centre of the marked cross.



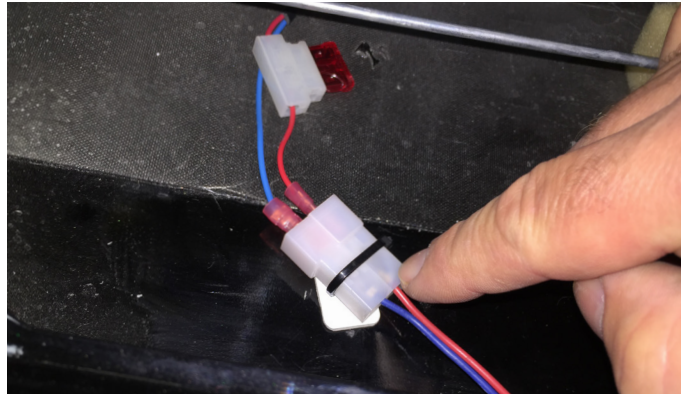
4, FIT THE TRUCKLOK MECHANISM.

Fit the TRUCKLOK through the aperture in the tailgate as shown.
 Locate the slotted hole on the tip of the mechanism over the stud in the rear of the handle then re-fit the nut.
 Fit the self-tapping screw through the other hole in the mechanism then screw it into the pilot hole previously drilled.



5, FIT THE WIRING HARNESS.

Remove the screw from the plastic cover on the bottom/left of the tailgate.
 Connect the end of the wiring harness containing the fuse, to the plug on the actuator. Blue to Blue and Red to Red.
 Secure this to the inside of the tailgate with the self adhesive mount and cable tie.



6, FEED THE WIRES FORWARD.

Feed the other end of the harness through the grommets in the tailgate and body then secure with a cable tie as shown. Re-fit the cover.

Continue to run the wires forward along the N/S chassis rail (securing with cable ties) until it is level with the front passenger seat.



6, PASS THE HARNESS INTO THE VEHICLE.

Underneath the vehicle, find this grommet located under the front passenger seat.

Make a small hole in the grommet, to the side of the main cable and pass the end of the TRUCKLOK harness through, into the cab.



7, REMOVE TRIM.

Unclip and remove the front passenger side door sill trim.

Reach under the carpet to locate the harness wire and draw it through to the sill.



8, LOCATE VEHICLE LOOM.

Peel back the door rubber from the lower section of the B post.

Pop the lower clip on the cover to gain access to the wires beneath.

Find the Blue wire with Black trace and the Blue with Red trace within the vehicle harness.

**9, CONNECT THE WIRES .**

Use the connectors provided to attach the harness of the TRUCKLOK to the vehicle loom as below.

Trucklok

RED

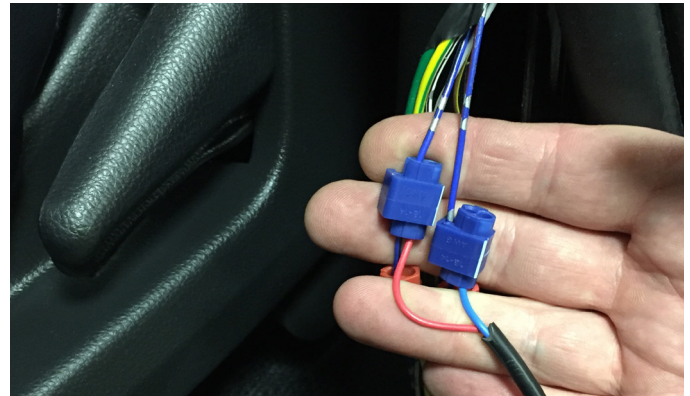
BLUE

Vehicle

BLUE/BLACK

BLUE/RED

Insulate and secure all wires then replace the vehicle's interior trims.

**10, TEST THE TRUCKLOK.**

With all of the doors closed, use the keyfob to lock the vehicle.

You will see and hear the TRUCKLOK activate and the handle will lock.

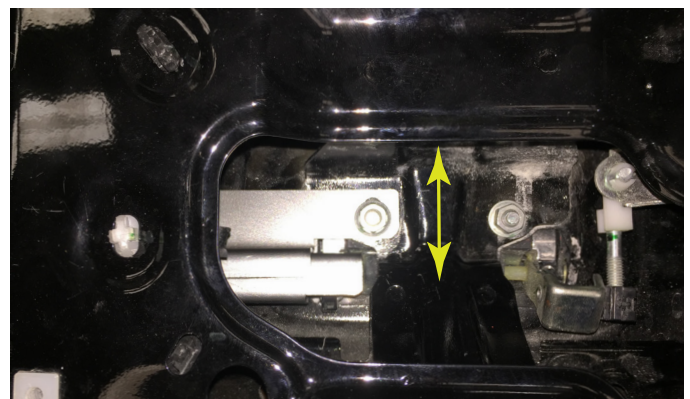
**11, ADJUSTMENT.**

To adjust the TRUCKLOK, open the tailgate, then lock the vehicle.

Slacken the nut slightly to allow movement of the plate.

Find the position which minimises free play of the handle while still allowing the mechanism to slide and lock.

Tighten the nut and re-fit the tailgate access cover.

**Installation notes:**

The L200 and Fullback are fitted with a security device which ensures that the vehicle doors cannot be accidental unlocked. If 'Unlock' is activated by the key fob and one of the cab doors is not opened within 20 seconds, the vehicle will automatically re-lock. The TRUCKLOK does not over-ride this feature. Take care not to leave the vehicle keys in the load bed.

Maintenance:

The TRUCKLOK will give years of trouble-free service but to keep it in tip-top condition, lubricate the moving parts with a small amount of grease once every 12 months.



Auto Styling UK Limited,
Unit 14 Narrowboat Way,
Dudley, DY2 0E2, United Kingdom

Tel: 01384 485 405 **Fax:** 01384 485 453

Email: fitting@autostylinguk.com

Web: www.autostylinguk.com

MODELS COVERED

Mitsubishi L200 Series 5 (2015-) Double Cab &
Fiat Fullback (2016-) Double cab.

These instructions are correct at time of publication
only and may be amended without notice.

For the latest version contact fitting@autostylinguk.com
or call us on 01384 485 405