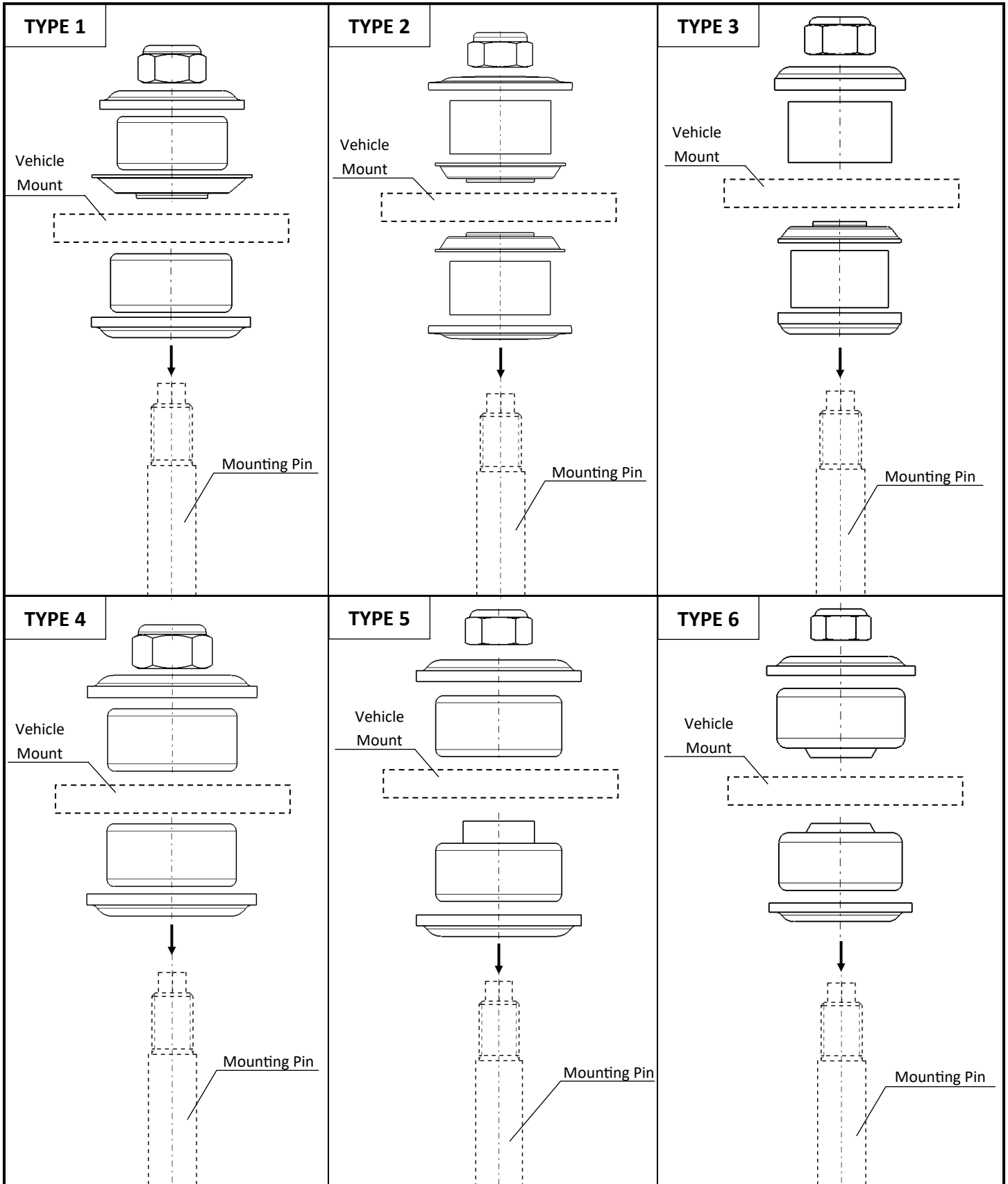
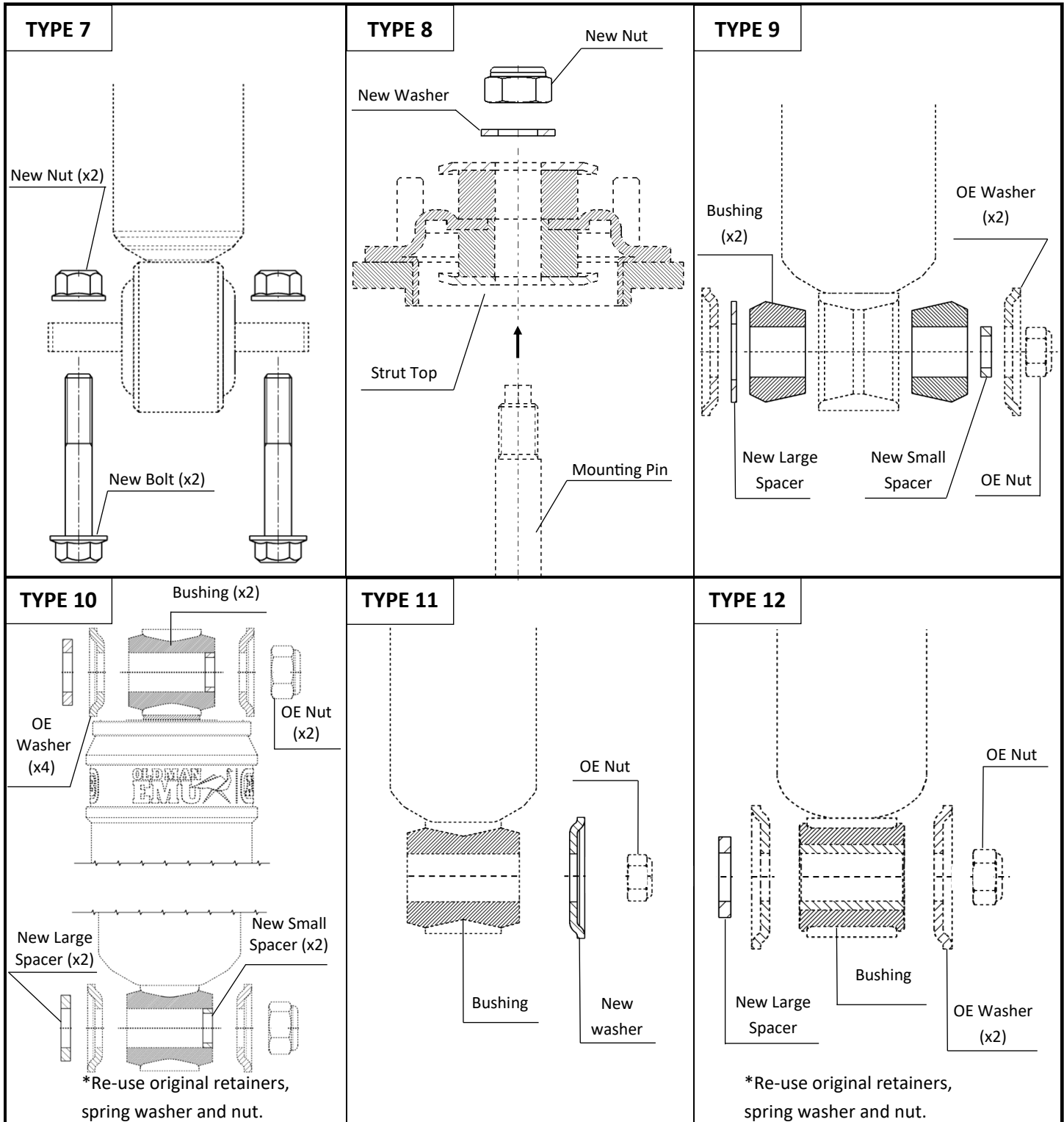


# SMALL MOUNTING PARTS (SMP) INSTRUCTIONS



# SMALL MOUNTING PARTS (SMP) INSTRUCTIONS



• To ensure correct fitment of small mounting parts reference type number on SMP bag to above chart

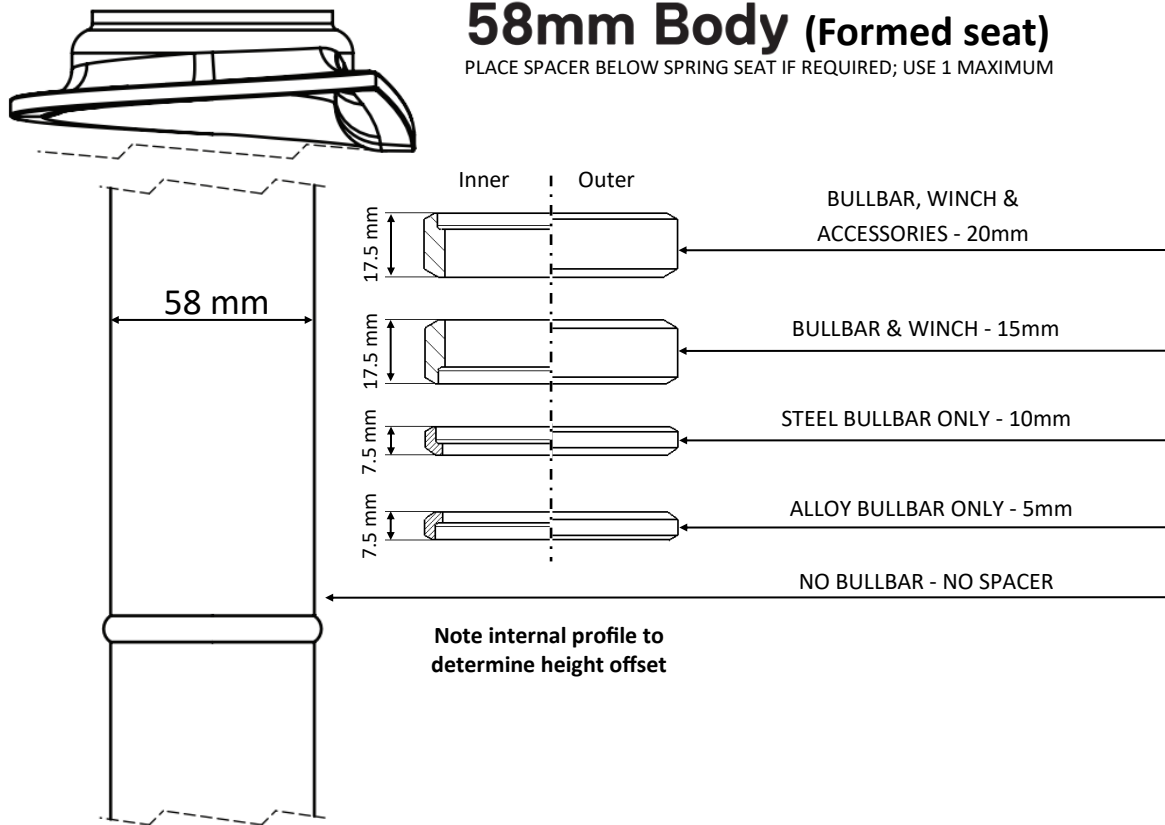
# ADJUSTABLE SPRING SEAT INSTRUCTIONS



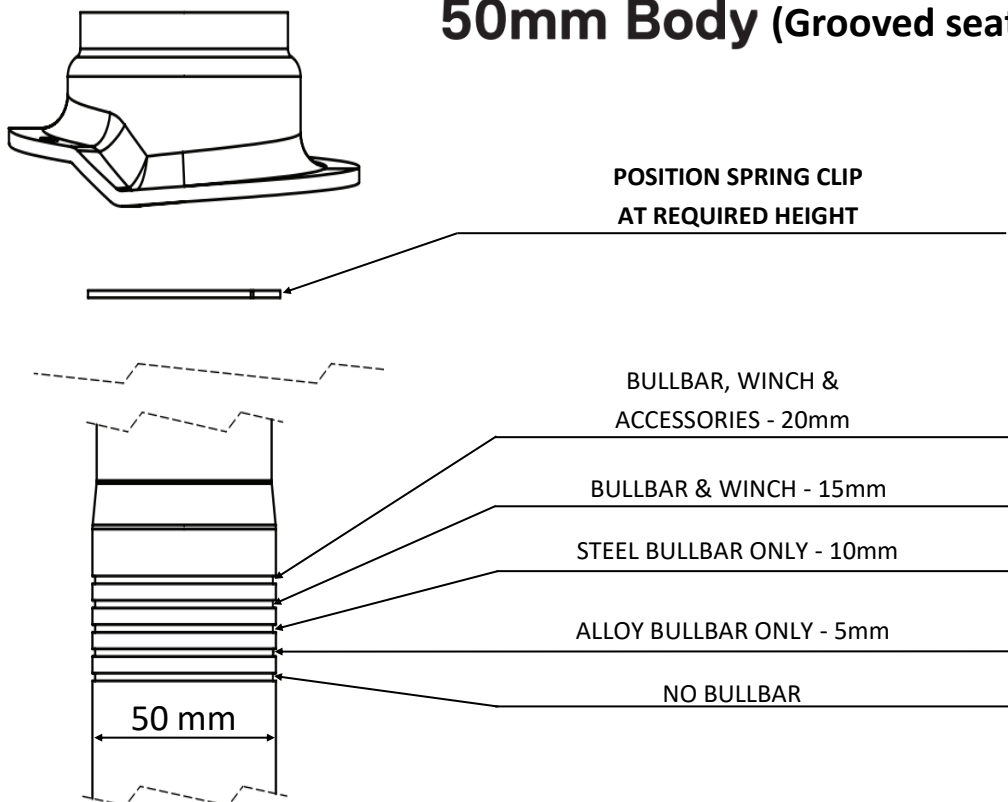
## Spring seat assembly

### 58mm Body (Formed seat)

PLACE SPACER BELOW SPRING SEAT IF REQUIRED; USE 1 MAXIMUM



### 50mm Body (Grooved seat)

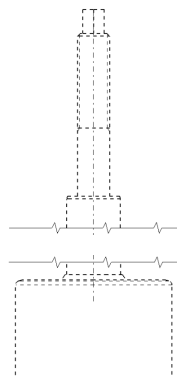
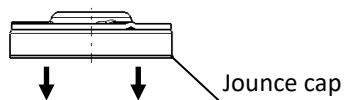


# ADJUSTABLE SPRING SEAT INSTRUCTIONS

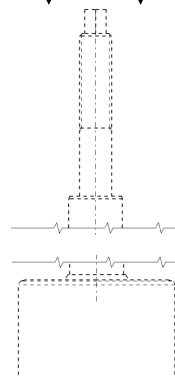
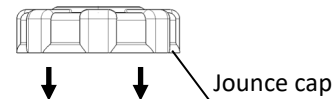


**Install jounce cap after spring seat assembly**

**58mm Body**



**50mm Body**



\*Models supplied without dust boot require OE dust boot and Jounce bumper to be re-used

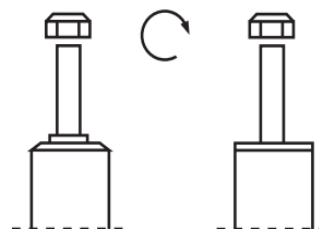
\*Use a small amount of grease to aid installation of jounce cap

\*Use a soft hammer to install cap

## MOUNTING INSTRUCTIONS

### List of Torques

Thread	M8	M10	M12	M14
Torque (Nm)	13	25	45	72
Torque (ft lb)	10	19	34	54



**Do not use an impact tool to loosen or tighten fasteners due to possible damage to the product. Self-locking nuts must only be used once.**



## WARNING

- Refer to Vehicle Manufacturer's specifications for torque values.
- Do NOT use an impact gun for installation of this product
- Do not use this product for any vehicle make or model, other than those specified by Old Man Emu / ARB.
- Do not remove labels from suspension components.
- This product or its SMP kit must not be modified in any way.
- The installation of this product may require the use of specialised tools and/or techniques.
- All rubber mounted strut/shock absorber attachments must not be fully tightened until after the suspension system is loaded (wheels on the ground)
- During installation, it is the duty of the installer to check correct operation/clearances & replace any worn component/fastener(s).
- Work safely at all times.