



FITMENT INSTRUCTIONS

Hercules Roof Conversion to Landcruiser 78 Series

DISCLAIMER

SIKA: PRELIMINARY INFORMATION

Alu-Cab recommends using Sika 552 AT. See the spec sheet [here](#).

Installation and fitment instructions include the tools required, fasteners included in the kit, and the hardware included in the kit.

Please follow the instructions and check the installation steps with the images in this document.

Alu-Cab recommends that all sealing work is allowed to cure for 24 hours, after which you may drive the vehicle on normal paved roads. Before driving off-road with your Alu-Cab product or operating your roof conversion, an additional cure period of 48 hours is required.

Failure to follow these instructions will void your warranty. Please ensure that you follow the sealant manufacturer's curing time as per their technical data sheet. These times may differ slightly from the times we have recommended.



Service Enquiries email
queries@alu-cab.com

DISCLAIMER

Preliminary information

All rights reserved. No part of this document may be reproduced, translated, stored in a retrieval system. Or transmitted, in any form or by any means, electronic., mechanical, photocopying, recording or otherwise, without prior written permission of the owner.

Review all instructions information carefully before installation.

Any damages, direct or indirect to the installer and/or property due to incorrect installation of any parts are the responsibility of the installer. Due to the various application and firmment options available, the responsibility lies with the user to ensure all mounting points are secure and tight before every trip.

If unsure, consult with your Distributor regarding the operations of our products.

Users are advised to be mindful of the load they are carrying and drive in accordance with road conditions.

Installation Instructions

Tools & Items Required:

1.1

The tables below show the equipment, i.e. tools and fasteners required to start the Hercules roof conversion fitment onto a Landcruiser 78 series.

TOOLS
Ratchet/impact wrench
Nibbler
Adhesive applicator
Drill and Bits - 5 & 8mm
Stepped drill bit
Rivnut gun
Grinder
Star screwdriver
8,10,12 & 13mm Spanner
8,10,12 & 13mm Socket and Ratchet Wrench
4mm & 6mm Allen key
Plastic block
Quick grips
Hammer
Centre punch

ITEM
Gantry Crane - 1 tonne rated
Set of Lifting Slings - 500kg rated each
Turpentine
Cloth
Sika 552 AT
25mm & 50mm Masking tape
Rust preventative paint
EPE Foam

Installation Instructions

1.2

Hardware Required: (Included with Hercules)

ITEM	DESCRIPTION	QTY
RC-LC78-A00	LC78 MAIN ASSEMBLY	1
RC-LC78-MNT-KIT	LC78 MOUNTING KIT	1
EWL-RC-LC78	LC78 WIRING LOOM	1

Installation Instructions

1.2.1

LC78 Main Assembly: (Included with Hercules)

NB: The color of the vehicle images might vary as additional improvements have been made over time.

ITEM	QTY
LC78 ROOF ASSEMBLY	1
LC78 BASE ASSEMBLY	1
LC78 CONSOLE ASSEMBLY	1

Installation Instructions

1.2.2

LC78 Mounting Kit: (Included with Hercules)

NB: The color of the vehicle images might vary as additional improvements have been made over time.

ITEM	QTY
LC78 FRONT MOUNTING BRACKET RHS	1
LC78 FRONT MOUNTING BRACKET LHS	1
LC78 MOUNTING BRACKET	4
LC78 BOLT LOCATOR PLATE	6
BACKING PLATE	24

ITEM	QTY
M6 HEX NUT S/S	4
M6 L/F RIVNUT	4
M6 SPRING WASHER S/S	8
M6x12mm FLAT WAM8x50 HEX BOLT S/SSHER S/S	8
M6x18 OVERSIZED WASHER S/S	8
M8 HEX NUT S/S	12
M8 L/F RIVNUT	4
M8 NUT CAP	12
M8 NYLOC NUT S/S	12
M8 SPRING WASHER S/S	16
M8x16mm FLAT WASHER S/S	24
M8x20mm OVERSIZED WASHER S/S	12
M8x25 B/HD BOLT S/S	4
M8x35 HEX BOLT S/S	12
M8x50 HEX BOLT S/S	12

Disclaimer



It is important to check for any leaks that may be occurring through the roof or door areas, before starting the roof conversion. This will ensure that you are aware of problem areas that may arise when the roof conversion is completed.

Installation Instructions

STEP 1:

Once you've checked the vehicle for any leaks, you can then set about preparing the vehicle by covering any areas inside the vehicle that may be susceptible to damage when removing the roof. Once all the parts are covered you can begin stripping the interior roof linings, seat belt mounts, and anything that may be attached or affected by the removal of the roof.



Installation Instructions

STEP 2:

When removing all interior window linings, sun visors, mirror mounts etc, ensure they are stored in a safe place, as some of these parts will be re-installed during the installation of the Hercules roof conversion.



Installation Instructions

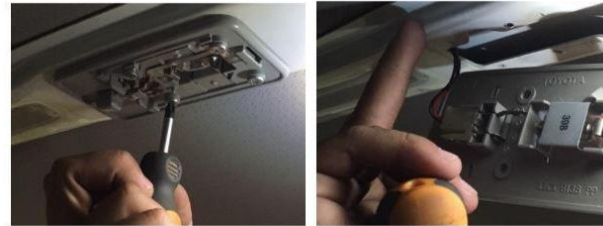


Installation Instructions

STEP 3:

Remove the light from the top hat stiffener.

This light will be relocated to the console assembly.



Installation Instructions

STEP 4:

Unbolt the A,B & C top hats



Installation Instructions

STEP 5:

Remove the rear brake light from the roof.



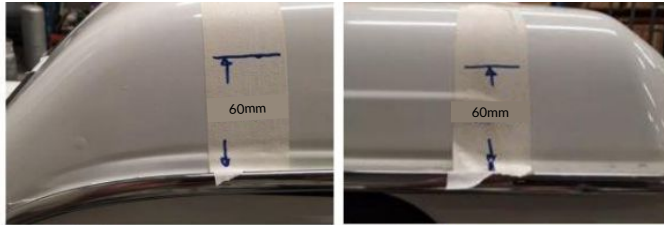
Installation Instructions



Installation Instructions

STEP 6 :

Measure and mark the roof 60mm along the sides and rear end of the vehicle and 70mm on the front side of the vehicle as seen below. Mask out along the measured edge, to serve as guide for trimming the roof.



SIDE FRONT

SIDE BACK



FRONT

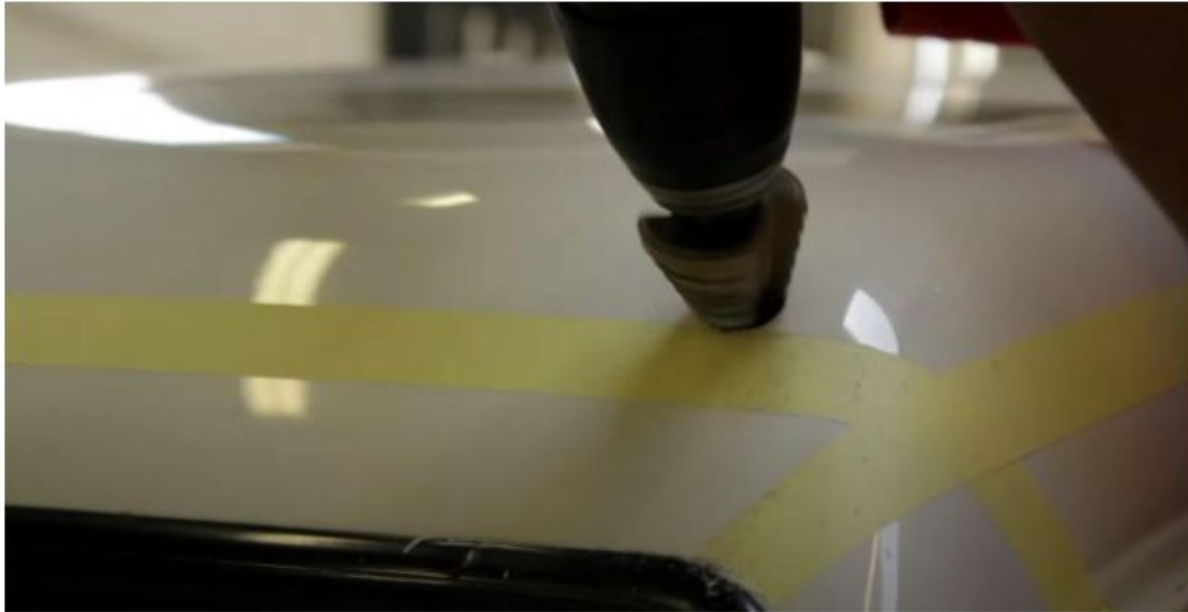
REAR



Installation Instructions

STEP 7:

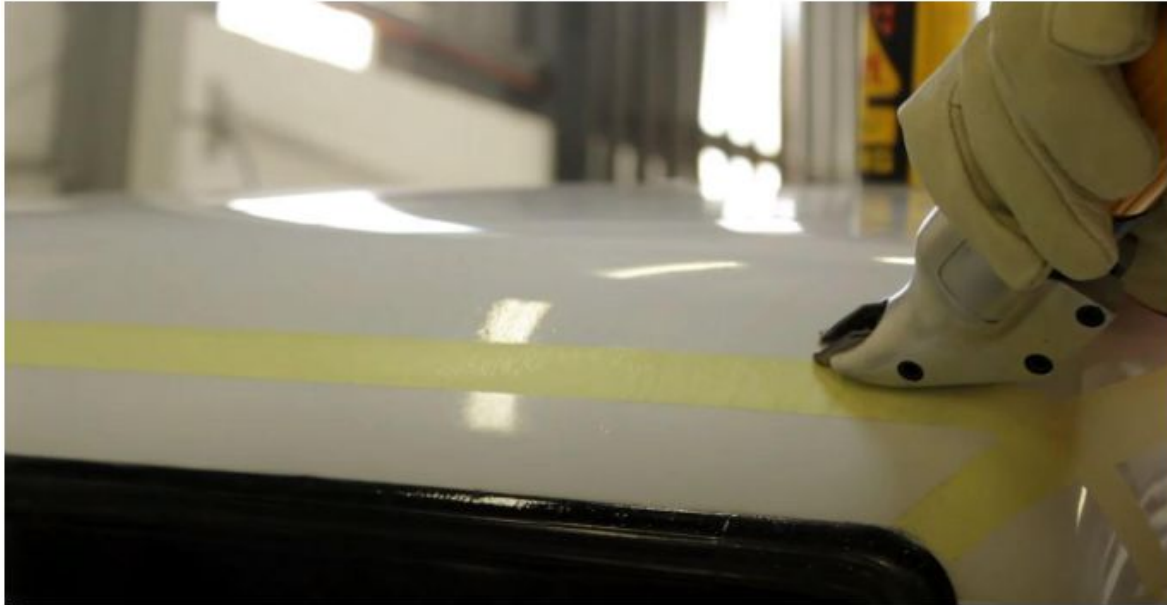
You will then need to drill access holes with the stepped drill bit at the corners of the roof so that you can use your Nibbler tool to cut the roof off.



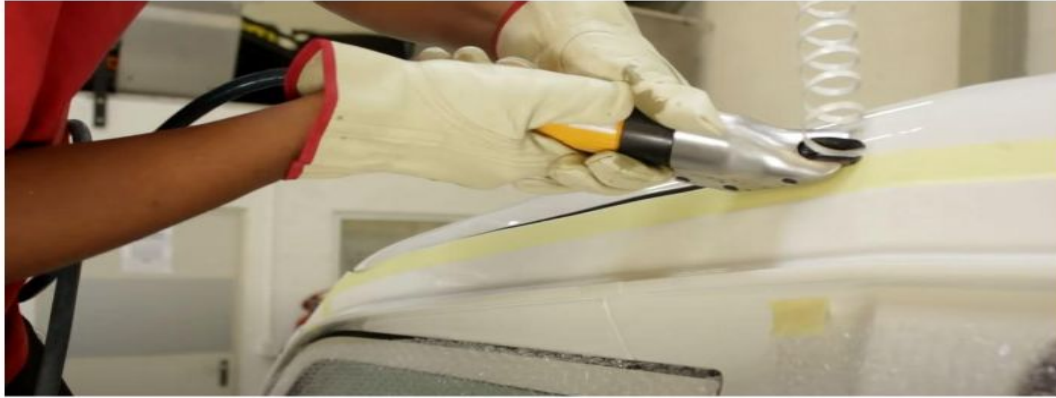
Installation Instructions

STEP 8 :

Once the holes has been drilled, proceed to cut the roof along the masked guide line using the Nibbler tool as shown below.



Installation Instructions



Installation Instructions

STEP 9:

The roof can now be removed from the vehicle.



Installation Instructions

STEP 10 :

Apply a rust preventive paint to the roof along the section which has been removed.



Installation Instructions

STEP 11.1:

Drill the A top hat mount loose on the areas which are spot welded.



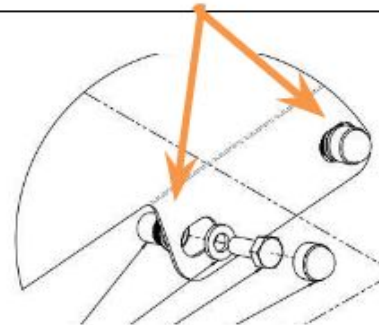
Installation Instructions

STEP 11.2:

Fit 2 x M6 rivnuts to the two bottom holes on either side of the A top hat mount. These holes will be used to mount the side cover panels provided with the roof conversion.



You will need to fit 2 x M6 Rivnuts to the two bottom holes on either side of the A-Top hat mount. These holes will be used to mount the side cover panels provided with the roof conversion.



Installation Instructions

STEP 11.3:

Mark and cut 20mm off the top of the B & C top hat mounts as seen below.



Installation Instructions

STEP 11.4:

Drill the bottom holes of the B & C top hat mounting points. Install the M8 rivnuts supplied in the kit.



Installation Instructions

STEP 12 :

Dry fit the roof conversion into position with the gantry crane. Use two foam padded bars across the top of the vehicle to balance the roof conversion on top.

This will allow space for the removal of the lifting straps, prior to manually lowering the roof conversion into position.

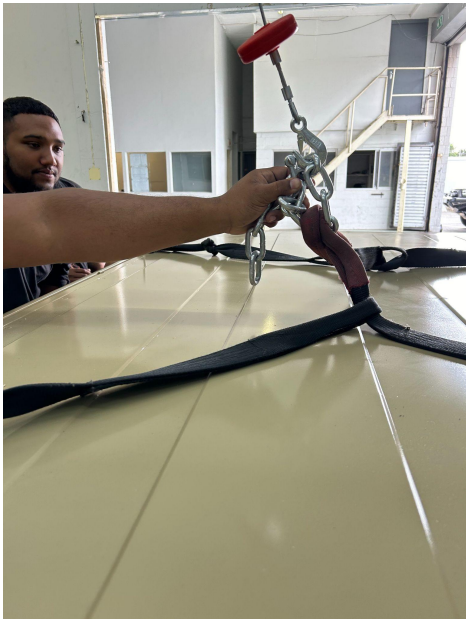


Installation Instructions

STEP 12.1:

The roof conversion can be lifted using a gantry crane and lifting straps.

M8 eye-bolts should be used in the roof cargo rail, to prevent the lifting straps from unwanted movement.



Installation Instructions

STEP 12.1:

Clamp down the roof conversion to ensure that it is correctly seated on the vehicle.



Installation Instructions

STEP 12.2 :

Mark the positions and drill out the holes on the base and vehicle for the roof conversion latches, bottom mounting bolts.

Use a 5mm drill bit, to match the M5 Button Head Bolt



Installation Instructions

STEP 12.3:

Remove the roof conversion once the position and fit have been verified, and the necessary latch mounting holes have been drilled.



Installation Instructions

STEP 13:

Place the roof conversion on a support structure, that allows access underneath the roof conversion.

Prepare the roof conversion base by roughening the inside lower edge with a Scotch-Brite pad, where it overlaps with the vehicle.

Apply Sika 552AT all the way around the inside lower edge of the roof conversion base.

Note the following skin and open times for Sika 552AT:

- Skin time* (CQP019-1) 30 minutes
- Open time (CQP526-1) 20 minutes



Installation Instructions

STEP 14 :

Final fit the roof conversion into position with the gantry crane. Use two foam padded bars across the top of the vehicle to balance the roof conversion on top.

This will allow space for the removal of the lifting straps, prior to manually lowering the roof conversion into position.

***Note that Step 14 in its entirety is time sensitive due to the aforementioned Skin Time of Sika.**



Installation Instructions

STEP 14.1:

Clamp down the roof conversion with Quick Grips to ensure that it is correctly seated on the vehicle.



Installation Instructions

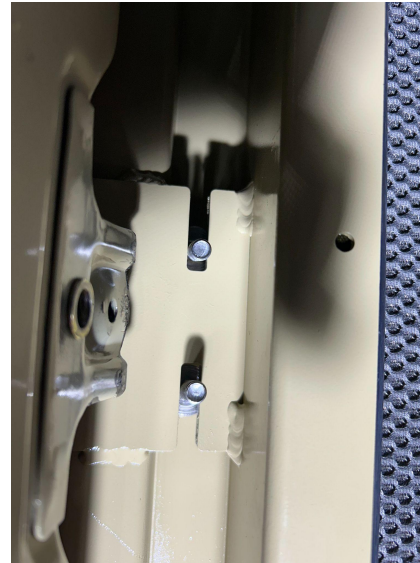
STEP 14.2 :

Place a bolt locator plate above the side mount support plate. Insert a M8x35 Hex Bolts into each of the slots and raise the mounting brackets into place.

Do not install the fasteners onto the M8x35 Hex Bolt.

Fix the bracket to the respective vehicle A, B & C top hat mounting positions with M6 and M8 Button Head Bolts, spring washers and washers as required.

Determine if a backing plate is necessary, to increase the roof conversion spacing. Use the M8x50 Hex Bolts accordingly.



Installation Instructions

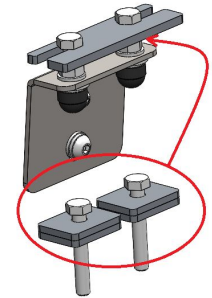
STEP 14.3 :

With the mounting brackets fixed to the vehicle, proceed to install the fasteners onto the M8 Hex Bolts that were installed in Step 14.2.

This will secure the roof conversion to the vehicle.

Take extreme precaution to not overtighten the M8 Hex Bolts, as this could cause bowing of the base, resulting in an insufficient seal between the lid and the base.

If bowing is observed, a backing plate must be installed between the mounting bracket and the roof conversion base.



Backing Plate

Installation Instructions

STEP 14.4 :

Fix the latch to the roof conversion base and car body.

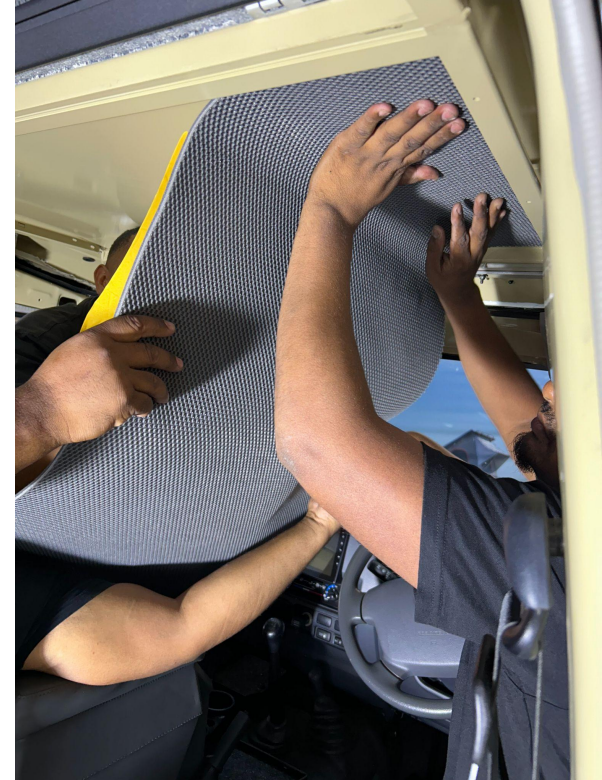
Install the extended M5x35 Button Head Bolt in the lower bracket hole, that has been prepared in Step 12.2



Installation Instructions

STEP 15:

Install the automotive roof lining onto the front base.



Installation Instructions

STEP 16 :

Install the Roof Console and Roof Molle Plate assembly.



Installation Instructions

***STEP 17:**

Prepare the existing roof light wire for soldering and extend the wire to reach the console and fit the OEM light which was removed from the B top hat to Hercules console as seen in the images below.

Furthermore, install the wiring loom through the roof console and roof conversion base, to the respective LED Lights, Rear Brake Light and Solar Plug on the roof conversion.

*This step should be carried out by a qualified electrician.

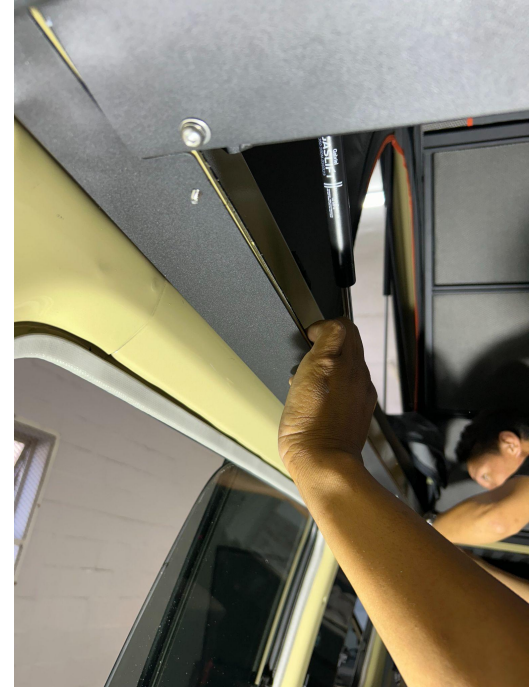


Installation Instructions

STEP 18 :

Instal the trim panel on the front, rear and sides of the roof conversion base.

- There is a left and right specific front trim panel.
- There is one trim panel fitted to the rear of the base.
- There is a left and right specific side trim panel



Installation Instructions

STEP 19 :

Proceed to mask off the roof gutter and base in preparation to sealing the seam between the two component.



Installation Instructions

STEP 20 :

Clean the roof gutter, to ensure that it is free from any debris.

Apply Sika between the roof gutter and the roof conversion base*. Wipe the excess Sika with a turpentine soaked cloth. Smooth out the Sika with soapy water.

*It is important to work with the Sika in sections, as too much time lapsed could result in difficulty to remove the excess and smooth over the Sika.



Installation Instructions

STEP 21 :

Remove the masking tape and clean the working area.



Installation Instructions

NB: Alu-Cab recommends that all sealing work is allowed to cure for 24 hours, after which you may drive the vehicle on normal paved roads.

Before driving off-road with your Alu-Cab product or operating your roof conversion, an additional cure period of 48 hours is required.

Pressured Water Testing should be conducted after curing to ensure that the installation is watertight.

By now you should have successfully fitted your Landcruiser Hercules Roof Conversion.

All that's left to do is pull the vehicle outside, pop open your new roof, fit the spring poles and see how well your new roof conversion works.

Installation Instructions



Disclaimer



WARNING

Always wear appropriate PPE (Personal protection equipment) when fitting our products. Although the mounting kit is designed to be DIY, if you have any doubts or concerns, contact an accredited fitment centre to carry out the work. Alu-Cab will not be liable for any injury to persons, and/or damage to products and/or vehicles.

While Alu-Cab Holdings takes reasonable measures to ensure that the contents of this Website are accurate and complete, Alu-Cab Holdings makes no representations or warranties, whether express or implied, as to the quality, timeliness, operation, integrity, availability or functionality of this Website or as to the accuracy, completeness or reliability of any information on this Website. Alu-Cab Holdings reserves the right to make changes, corrections and/or improvements to the information and to the products and programs described in such information, at any time without notice.

Alu-Cab Holdings will use reasonable endeavours to maintain the availability of the Website, except during scheduled maintenance periods, and reserves the right to discontinue providing the Website or the service or any part thereof with or without notice to you. Any person who accesses this Website or relies on this Website or on the information contained in this Website does so at his or her own risk.

Occasionally, at our discretion, we may include or offer third-party products or services on our website. These third-party sites have separate and independent privacy policies. We therefore have no responsibility or liability for the content and activities of these linked sites. Nonetheless, we seek to protect the integrity of our site and welcome any feedback about these sites.