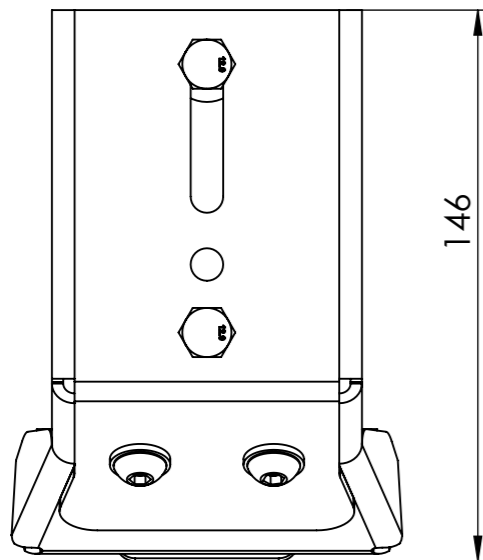
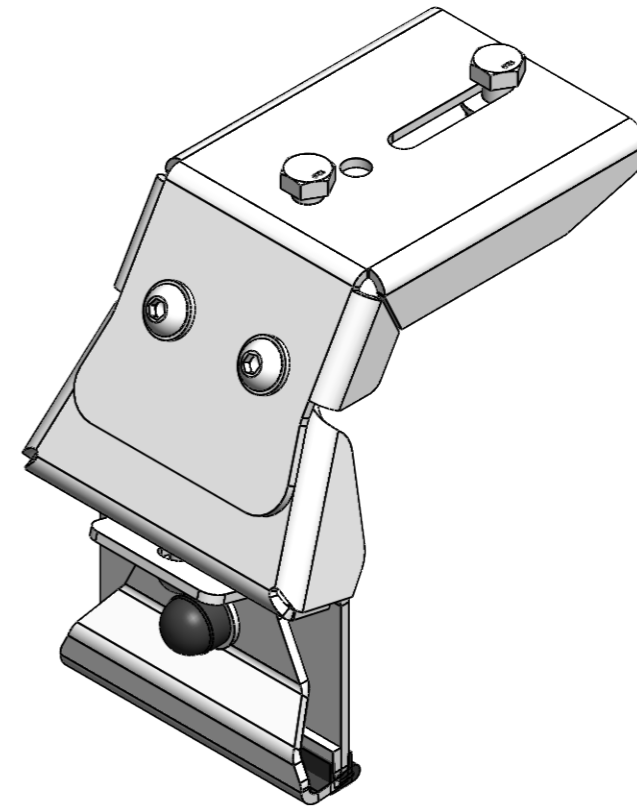
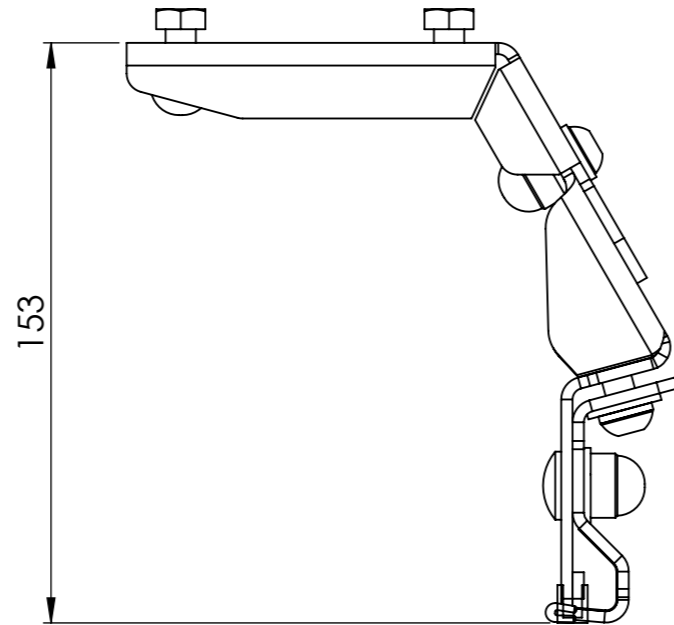
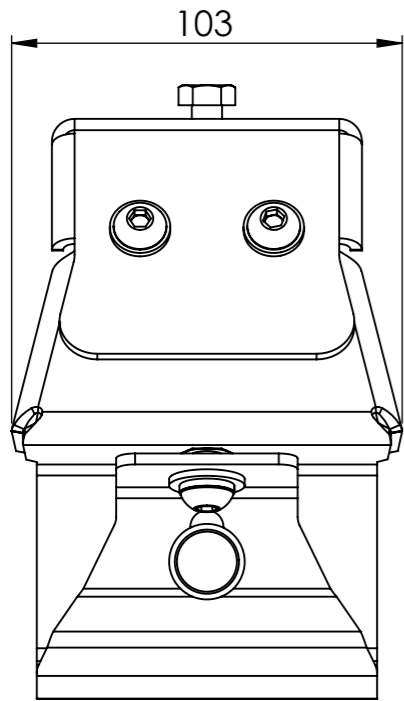


PART INFO	MASS (kg):	
	ORDERING:	
PROCESS INFO	SHEET METAL:	
	LASER CUT:	
	PUNCHED:	
	MACHINED:	
	OFF THE SHELF:	
	CNC ROUTING:	
	WELDED:	
CUT:		
DRILL / TAP:		
TUMBLING:		
POLISHED:		
POWDER:	Y	
SPRAY:		
COLOUR:	SANDPAPER BLACK	



TOLERANCES TO ASSUME UNLESS INDICATED OTHERWISE			
NOM DIMENSION	RANGE (mm)	TOLERANCE	
0.50	- 3.00	± 0.10	
3.00	- 6.00	± 0.15	
6.00	- 30	± 0.20	
30	- 120	± 0.30	
120	- 400	± 0.50	
400	- 1000	± 1.00	
1000	- 1000<	± 2.00	

MATERIAL DESCRIPTION: \_\_\_\_\_ MATERIAL THICKNESS (mm): \_\_\_\_\_

DESCRIPTION: **GUTTER FOOT MOUNTING ASSEMBLY**

SHEET: A3  
SCALE: 1:2  
SHEET 1 of 2



PROJECT: \_\_\_\_\_  
DRAWN BY: Cobus le Roux DATE: 2023-05-31  
THE INFORMATION CONTAINED WITHIN THIS DOCUMENT IS THE INTELLECTUAL PROPERTY OF ALU-CAB (PTY) LTD

DRAWING NO. \_\_\_\_\_ REV \_\_\_\_\_  
**GUTTER FOOT MOUNTING ASSEMBLY**

REVISIONS			
REV.	DESCRIPTION	DATE	APPROVED
01		2023-07-26	System Administrator
02		2023-08-31	System Administrator