



OLD MAN EMU

FITTING INSTRUCTIONS

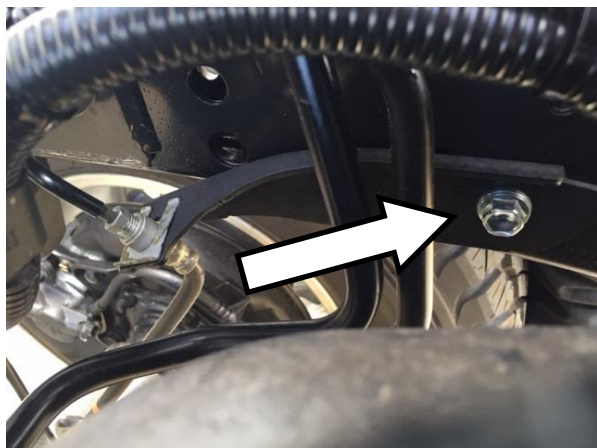
FK82

REAR BRAKE LINE DROP FITTING KIT TO SUIT LANDCRUISER 70 SERIES REAR BRAKE LINE DROP 2014 ON

KIT CONTENTS

| DESCRIPTION | QTY. |
|-----------------------------------|------|
| LC70 REAR BRAKE HOSE DROP BRACKET | 1 |
| LC70 REAR BRAKE LINE DROP BRACKET | 1 |
| BOLT M8 X 20 GR8.8 | 2 |
| NUT NYLOCK M8 | 1 |
| WASHER FLAT M8 | 3 |
| WASHER SPRING M8 | 1 |

FITTING PROCEDURE



1. DISCONNECT THE REAR BRAKE HOSE BRACKET FROM THE CHASSIS.



2. DISCONNECT THE BRAKE HARD LINE BRACKET FROM THE CHASSIS.



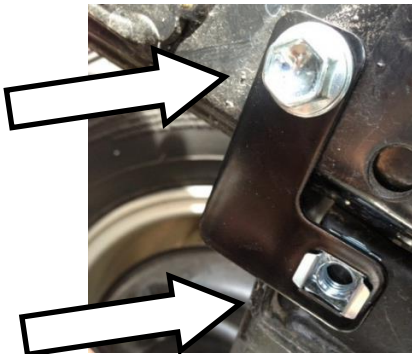
OLD MAN EMU FITTING INSTRUCTIONS



3. RE- USING THE ORIGINAL BOLTS, ATTACH THE OME LC70 REAR BRAKE HOSE DROP BRACKET (LARGER BRACKET) TO THE CHASSIS

PARTS REQUIRED

- REAR BRAKE HOSE DROP BRACKET
- ORIGINAL M8 BOLT



4. INSERT CAGE NUT INTO DROP BRACKET AND RE- USING THE ORIGINAL BOLTS, ATTACH TO THE CHASSIS

PARTS REQUIRED

- REAR BRAKE HOSE DROP BRACKET (SMALLER BRACKET)
- ORIGINAL M8 BOLT
- M8 CAGE NUT



5. ATTACH THE ORIGINAL BRAKE HOSE BRACKET TO THE NEW OME DROP BRACKET. USE THE M8 BOLT, NUT AND WASHERS PROVIDED. TIGHTEN HAND TIGHT.

PARTS REQUIRED

- REAR BRAKE HOSE DROP BRACKET
- M8 BOLT
- M8 NYLOCK NUT
- M8 SPRING WASHER M8 FLAT WASHER X 2



6. RE- ATTACH THE ORIGINAL HARD LINE BRACKET TO NEW OME BRACKET USING THE M8 BOLT AND WASHER PROVIDED. TIGHTEN ALL BOLTS THOROUGHLY.

PARTS REQUIRED

- REAR BRAKE LINE DROP BRACKET
- M8 BOLT
- M8 SPRING WASHER
- M8 FLAT WASHER