

INSTALLATION MANUAL

PRODUCT: FRONT BUMPER
MODEL: JEEP WRANGLER JK (2007-2018)
JEEP WRANGLER JL (2017-)
JEEP GLADIATOR JT (2019-)
PART NO: 2D.2701.1-NL
2D.2702.1-NL



CAUTION!

To reduce the risk of serious injury or damage, please read and understand all instructions and procedures before attempting to install or use this product.
Safety glasses must be worn at all times during installation or maintenance of this product.
Ensure all mounting bolts are tensioned after 400 kms and periodically there after.

NOTICE

Whilst the bumper adds additional protection to your vehicle, precautionary measures still need to be taken to avoid damage.
Always drive to the conditions and your surroundings

FRONT BUMPER

Part Number: 2D.2701.1-NL
Suited to vehicle: JEEP WRANGLER JL 2017-
JEEP WRANGLER JK 2007-2018
JEEP GLADIATOR JT 2019-
Material: Aluminum/Steel
Dimensions: 1950x509x465 mm
76,8x20x18,3 inch
Weight: 45 kg / 99,2 pound
Compatibility: Underbody Armor RIVAL 2333.2758.1.6



Part Number: 2D.2702.1-NL (STUBBY)
Suited to vehicle: JEEP WRANGLER JL 2017-
JEEP WRANGLER JK 2007-2018
JEEP GLADIATOR JT 2019-
Material: Aluminum/Steel
Dimensions: 1303x545x413 mm
51,3x21,4x16,2 inch
Weight: 38 kg / 83,8 pound
Compatibility: Underbody Armor RIVAL 2333.2758.1.6

SAFETY NOTICE

- * The RIVAL Bumper is designed to compliment the use and design of the specified vehicle under conditions specified by the vehicle manufacturer.
- * While driving the vehicle at any speed, collision with any other vehicle, animal or object must always be avoided.
- * Following any collision with any other vehicle, animal or object, the RIVAL Bumper and the vehicle must be inspected by a specialized or suitably qualified vehicle repairer for possible damage to the components and assemblies in order to confirm suitability for further use of the vehicle.
- * It is strongly recommended that you do not operate a vehicle with a damaged bumper or its components. In the case of damage, please contact the nearest RIVAL dealer. Vehicle, or where the bumper has been damaged, is extremely dangerous and must be avoided at all cost.
- * The operation of a vehicle where the bumper is not properly attached and fastened to the vehicle, or where the bumper has been damaged, is extremely dangerous and must be avoided at all cost.
- * It is recommended that you carry out regular inspections of all the bumper elements such as all bolts, wires, connectors.
- * A winch with a pull capacity of up to 12000 lb can be installed with the RIVAL Bumper. It is not advisable to exceed this pulling capacity since damage, injury or death may occur where the 12000lb recommended capacity is exceeded. The Rival bumper provides standard 4 1/2"x10" mounting holes.

INSTALLATION NOTICE

- * Personal safety during the installation process must be adhered to at all times and the use.
- * Estimated time for installation: 2 hours.
- * The RIVAL Bumper must be mounted and affixed to the vehicle according to this installation manual of personal safety equipment is highly recommended.
- * Do not install this bumper on vehicle models other than those allowed in this manual.
- * Check state and local highway safety laws regarding permitted bumper types and heights.

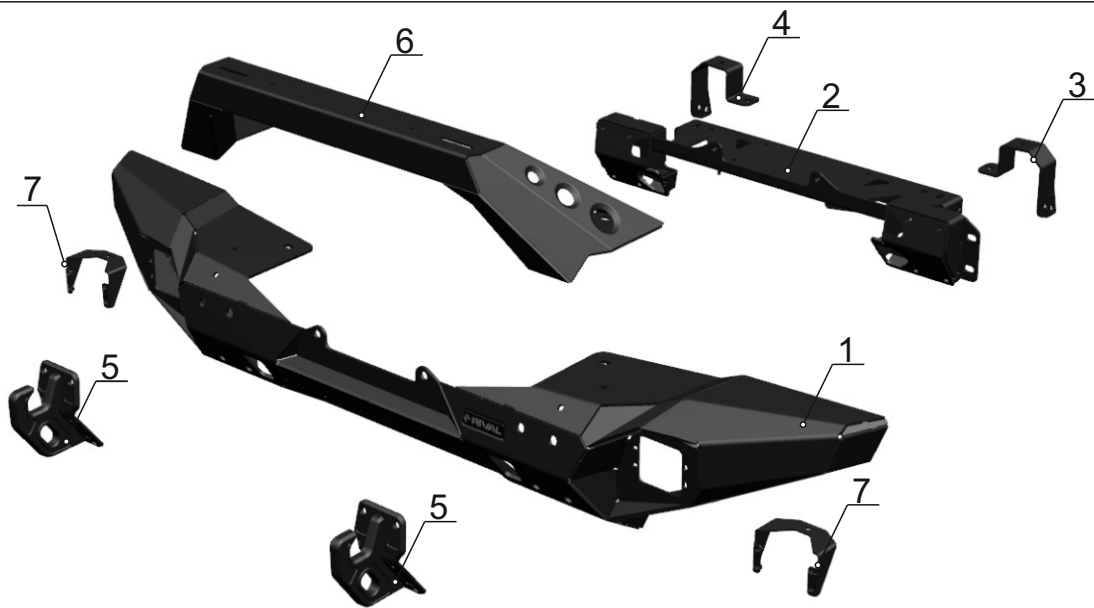
REQUIRED TOOLS

- * Basic tool kit
- * Torque wrench
- * Crosspoint and flat head screwdriver

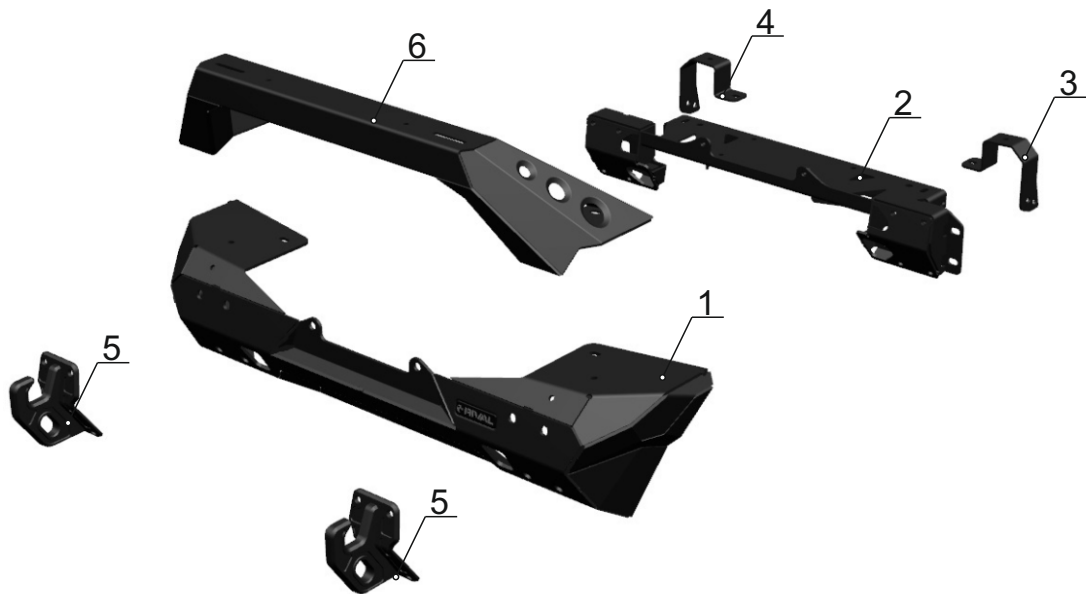
TORQUE SETTING

* M6 - 9 N·m, * M10 - 30 N·m, * M12 - 77 N·m.

PARTS LISTING



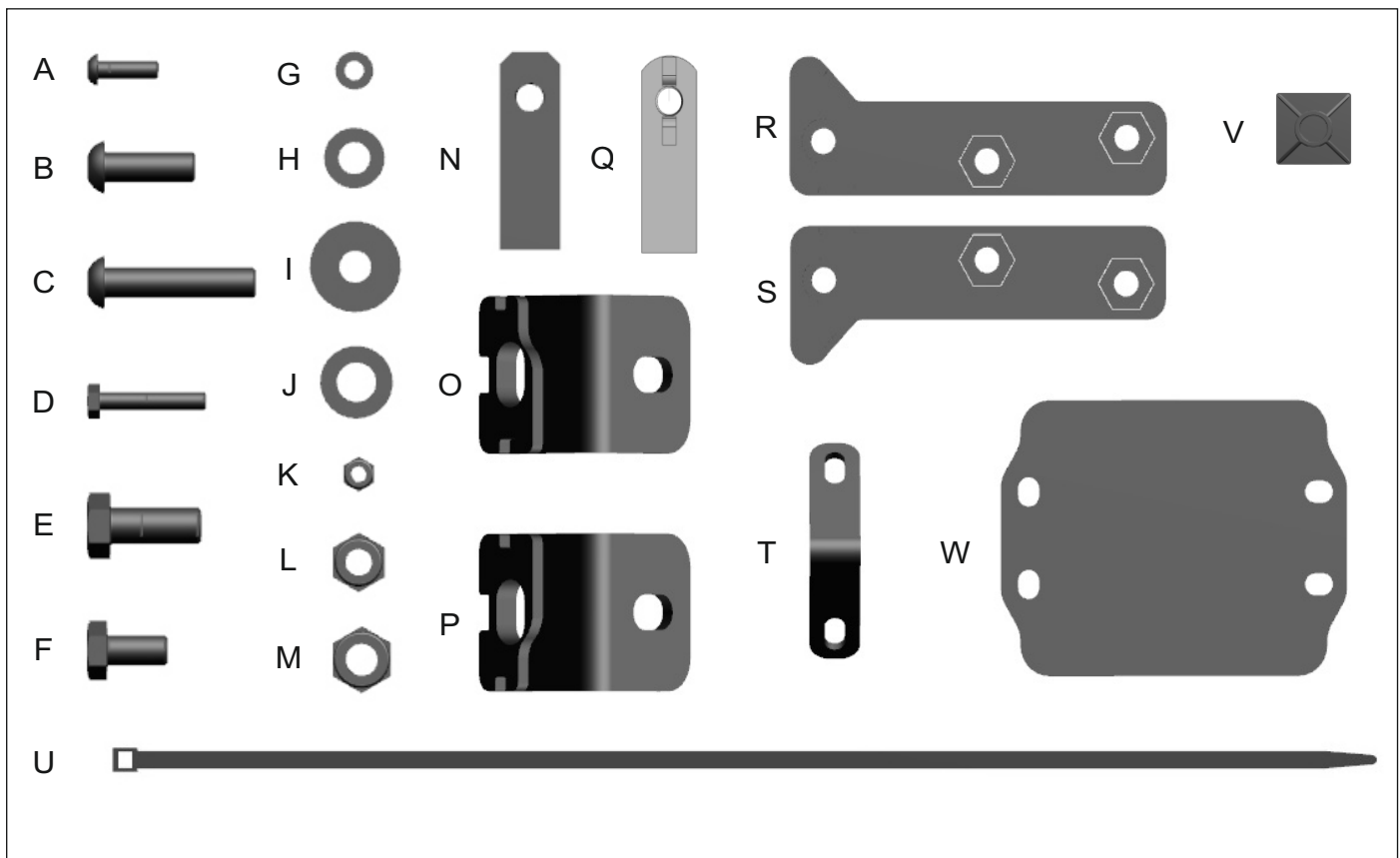
Front bumper 2D.2701.1-NL



Front stubby bumper 2D.2702.1-NL

- 1. Aluminum bumper body... Qty 1
- 2. Winch bracket..... Qty 1
- 3. Left adapter..... Qty 1
- 4. Right adapter..... Qty 1
- 5. Tow hooks..... Qty 2
- 6. Lightbar..... Qty 1
- 7. LED brackets..... Qty 2

PARTS LISTING



2D.2701.1-NL

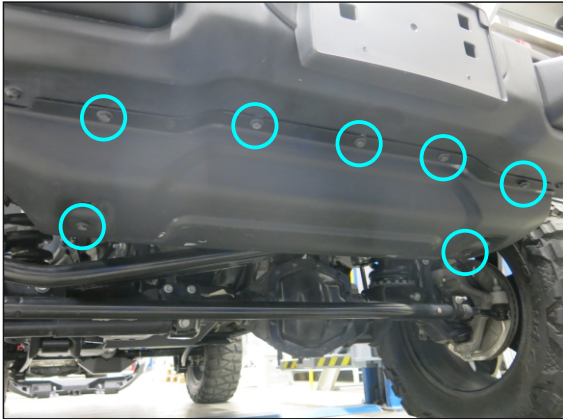
A. Screw M6x20.....	Qty 10	M. Nut M12.....	Qty 8
B. Screw M10x30.....	Qty 16	N. Insert nut M10x65/15.....	Qty 2
C. Screw M10x50.....	Qty 2	O. Angle strut bracket right (JL, JT)	Qty 1
D. Bolt M6x35.....	Qty 2	P. Angle strut bracket left (JL, JT)....	Qty 1
E. Bolt M12x30.....	Qty 8	Q. Insert nut M10 with cables.....	Qty 2
F. Bolt M10x20.....	Qty 10	R. Insert bracket left (JK).....	Qty 1
G. Washer 6.....	Qty 16	S. Insert bracket right (JK).....	Qty 1
H. Washer 10.....	Qty 32	T. Vacuum pump bracket.....	Qty 2
I. Flat washer 10	Qty 4	U. Cable tie.....	Qty 6
J. Washer 12.....	Qty 16	V. Cable clips.....	Qty 5
K. Nut M6.....	Qty 4	W. LED light cap.....	Qty 2
L. Nut M10.....	Qty 8		

2D.2702.1-NL

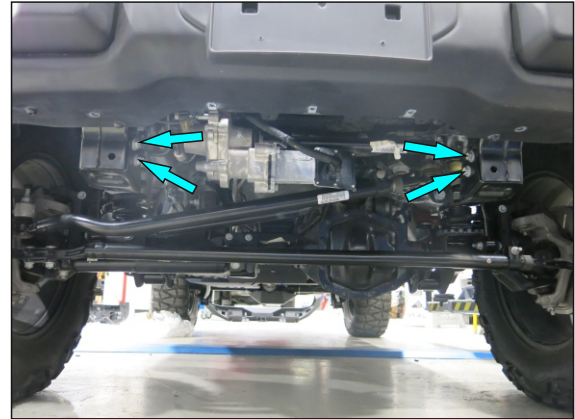
A. Screw M6x20.....	Qty 2	L. Nut M10.....	Qty 8
B. Screw M10x30.....	Qty 16	M. Nut M12.....	Qty 8
C. Screw M10x50.....	Qty 2	N. Insert nut M10x65/15.....	Qty 2
D. Bolt M6x35.....	Qty 2	O. Angle strut bracket right (JL, JT)	Qty 1
E. Bolt M12x30.....	Qty 8	P. Angle strut bracket left (JL, JT)...	Qty 1
F. Bolt M10x20.....	Qty 10	Q. Insert nut M10 with cables.....	Qty 2
G. Washer 6.....	Qty 8	R. Insert bracket right (JK).....	Qty 1
H. Washer 10.....	Qty 32	S. Insert bracket left (JK).....	Qty 1
I. Flat washer 10	Qty 4	T. Vacuum pump bracket.....	Qty 2
J. Washer 12.....	Qty 16	U. Cable tie.....	Qty 6
K. Nut M6.....	Qty 4	V. Cable clips.....	Qty 5

INSTALLATION PROCEDURE

Preparation for installation on JK, JL, JT



1. Remove 7 bolts securing steering skid plate. Uninstall skid plate.



2. Unscrew 2 bolts (on each side) securing skid plate bracket.



3. Unscrew 2 bolts securing OE skid plate.



4. Remove fascia plate trim clips.

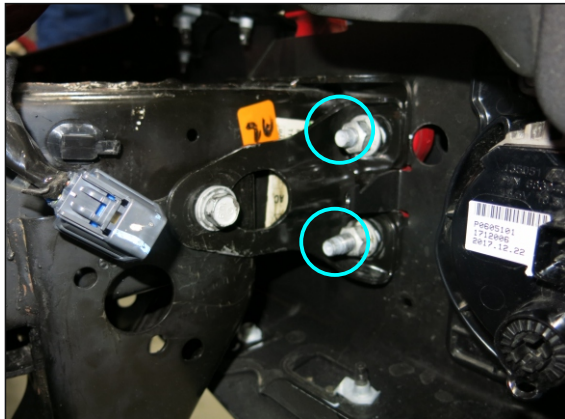


5. Remove plastic push clips, using a small feather edge screwdriver.

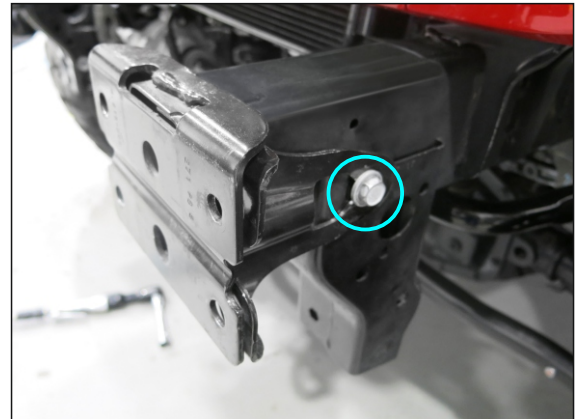


6. Disconnect the fog light wire harness.

INSTALLATION PROCEDURE

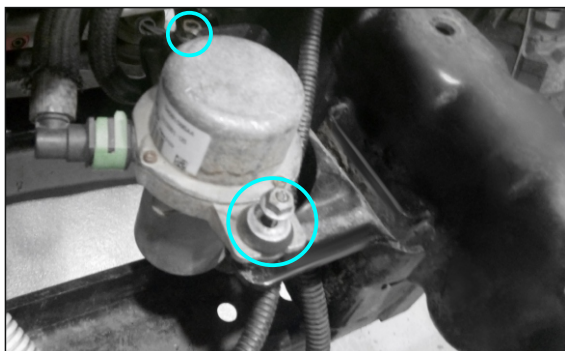


7. Unscrew 8 nuts from the OE bumper (four on each side). Remove OE bumper, remove horn.



8. Remove 4 pcs frame reinforcement (two on each side), by unscrewing OE bolts. **Set bolts aside for re-use later on.**

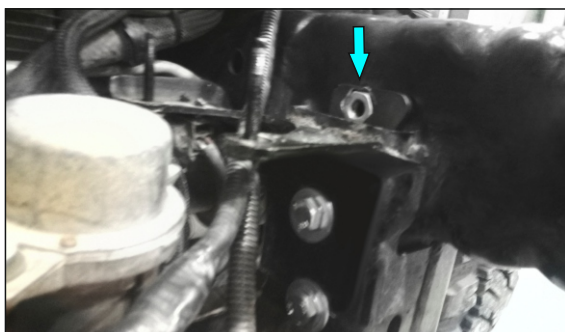
Winch bracket installation on JK



9. Unscrew vacuum pump nuts.



10. Remove vacuum pump.



11. Install insert bracket (pos.R,S), fix it using bolts M10x20 (pos.F) and washers 10 (pos.I). **Do not tighten yet.**



12. Install winch plate bracket onto the vehicle frame. Fix it using bolts M12 (pos.E), nuts M12 (pos. M) and two washers 12 (pos. J). **Do not tighten yet.**

INSTALLATION PROCEDURE



13. Fix the winch plate bracket from the inside, using bolts M10x20 (pos.F), washers M10 (pos.H) and insert bracket (pos.R,S), that was installed before step 11 of manual.

Do not tighten yet.



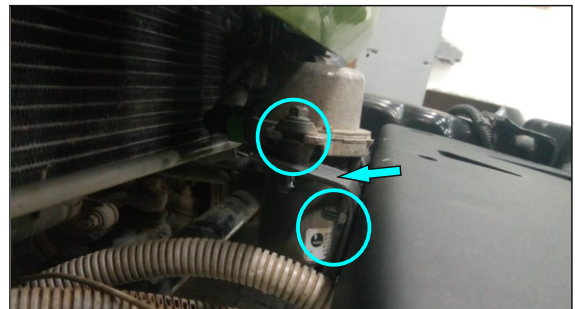
14. Install insert nut (pos. Q) in adapter (pos. 3,4). Unbend the wire.



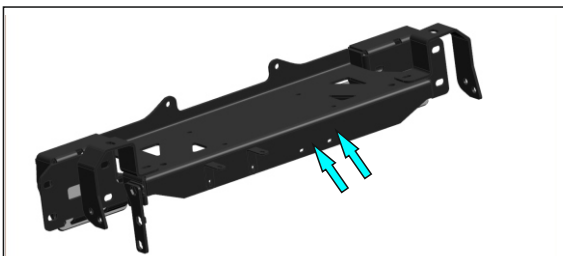
15. Install adapter (pos.3,4). Fix it to the frame using bolt M10x20 (pos.F), washer M10 (pos.H) and insert nut (pos.N).

Fix adapter to the winch plate bracket using screw M10 (pos.B), two washers m10 (pos.H) and nut M10 (pos. L).

Tighten hardware after that.



16. Install vacuum pump bracket (pos.T) on the winch plate bracket using screws 6x20 (pos.A), washers M6 (pos.G), nuts M6 (pos.K). Install vacuum pump on the bracket, preventing contact with radiator. Fix it using bolt M6x35 (pos.D), washers M6 (pos.G) and nuts M6 (pos.K).



17. Install horn using OE bracket and bolts M10x20 (pos.F), washers M10 (pos.H) and nuts M10 (pos.L).

INSTALLATION PROCEDURE

Winch mount installation on JL, JT



18. Install winch plate bracket onto the vehicle frame. Fix it using bolts M12 (pos.E), nuts M12 (pos. M) and two washers 12 (pos.J). **Do not tighten yet.**



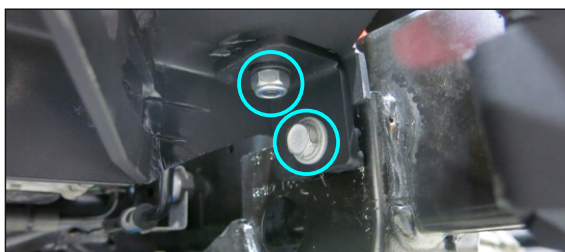
19. Install insert nut (pos. Q) in adapter (pos. 3,4). Unbend the wire.



20. Install adapter (pos.3,4). Insert screw M10 (pos.B) onto winch plate bracket (as shown). **Do not tighten yet.**



21. Fix adapter to the frame using OE bolt. **Do not tighten yet.**



22. Install angle strut bracket (pos. O,P). Fix it to the frame using OE bolt. Fix adapter (pos.3,4). and angle strut bracket (pos. O,P) to the winch plate bracket using screw M10 (pos. B), washers M10 (pos. H) and nut M10 (pos. L).

Tighten hardware after that.

INSTALLATION PROCEDURE

Aluminum bumper body installation on JEEP WRANGLER JK, JL and GLADIATOR JT



23. Install aluminum bumper body onto winch plate bracket. Fix it using two screws M10 (pos.C) and washers M10 (pos.H). **Do not tighten yet.**



24. Install tow hooks (pos.5) onto the bumper. Fix it using screws M10(pos.B) and washers M10 (pos.H). **Do not tighten yet.**



25. Due to the tight fit of the winch, it is recommended to install the fairlead before installing the winch.



26. Install lightbar (pos.6) onto the bumper.



27. Fix it using screws M10 (pos.B), washers M10 (pos.H) and nuts M10 (pos.L).

Tighten hardware after that.

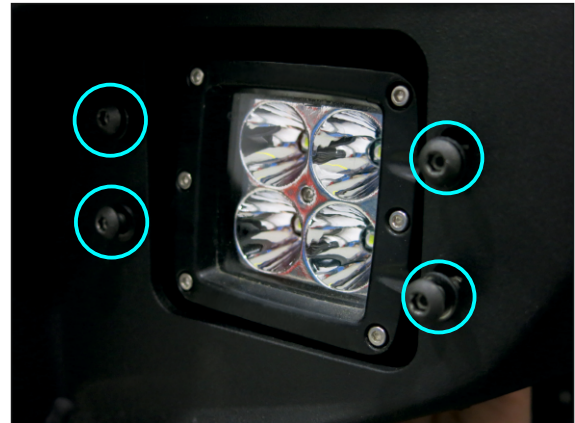
INSTALLATION PROCEDURE



28. Install LED lights onto LED brackets (pos.7).

LED lights are not supplied with bumper.

LED lights installation is available only for 2D.2701.1-NL bumper.

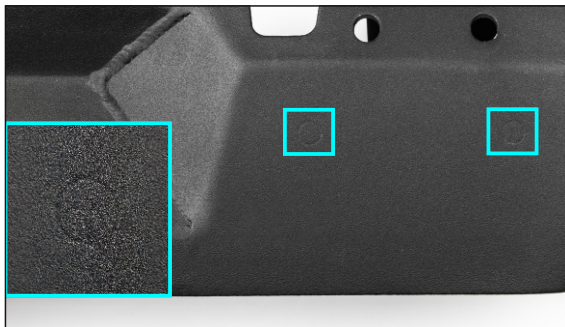


29. Install LED lights from the inside of the bumper. Fix it using screws M6 (pos.A), washer 6 (pos.G).

If you don't have LED lights, install the LED light cap (pos. W) with screws M6 (pos. A), washers 6 (pos. G), LED brackets (pos.7).

Tighten screws after that.

Fix wire on the bumper, using cable tie (pos.U) and cable clips (pos.V).



30. For Jeep Wrangler JL:
To install RIVAL lower skid plate (part number 2333.2758.1.6) find 4 circle perforations on the bottom of the bumper and knock them out.



31. Then follow the instructions supplied with the skid plate.

INSTALLATION PROCEDURE

Before operating a vehicle fitted with RIVAL Bumper 2D.2701.1-NL or 2D.2702.1-NL:

- make sure all fittings are tightened
- check winch operation
- check all electrical wiring attached to lights



Thank you for your choice!

**Sincerely,
RIVAL 4x4 Team**